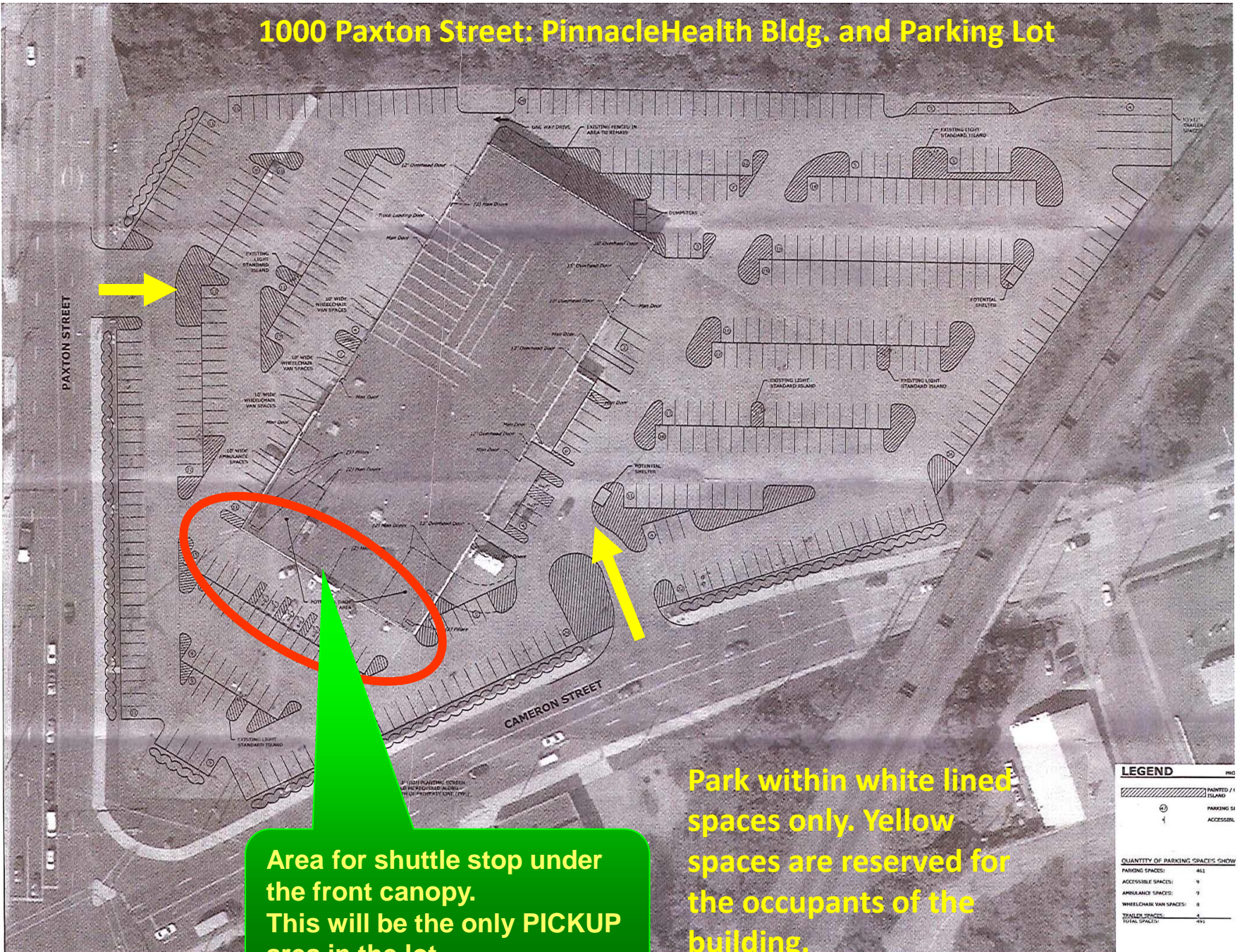


1000 Paxton Street: PinnacleHealth Bldg. and Parking Lot



Area for shuttle stop under the front canopy. This will be the only PICKUP area in the lot.

Park within white lined spaces only. Yellow spaces are reserved for the occupants of the building.

LEGEND	
	PAVED / 1' ISLAND
	PARKING SPACES
	ACCESSIBLE

QUANTITY OF PARKING SPACES SHOWN	
PARKING SPACES:	463
ACCESSIBLE SPACES:	9
AMBUULANCE SPACES:	9
WHEELCHAIR VAN SPACES:	8
TRAILER SPACES:	4
TOTAL SPACES:	493